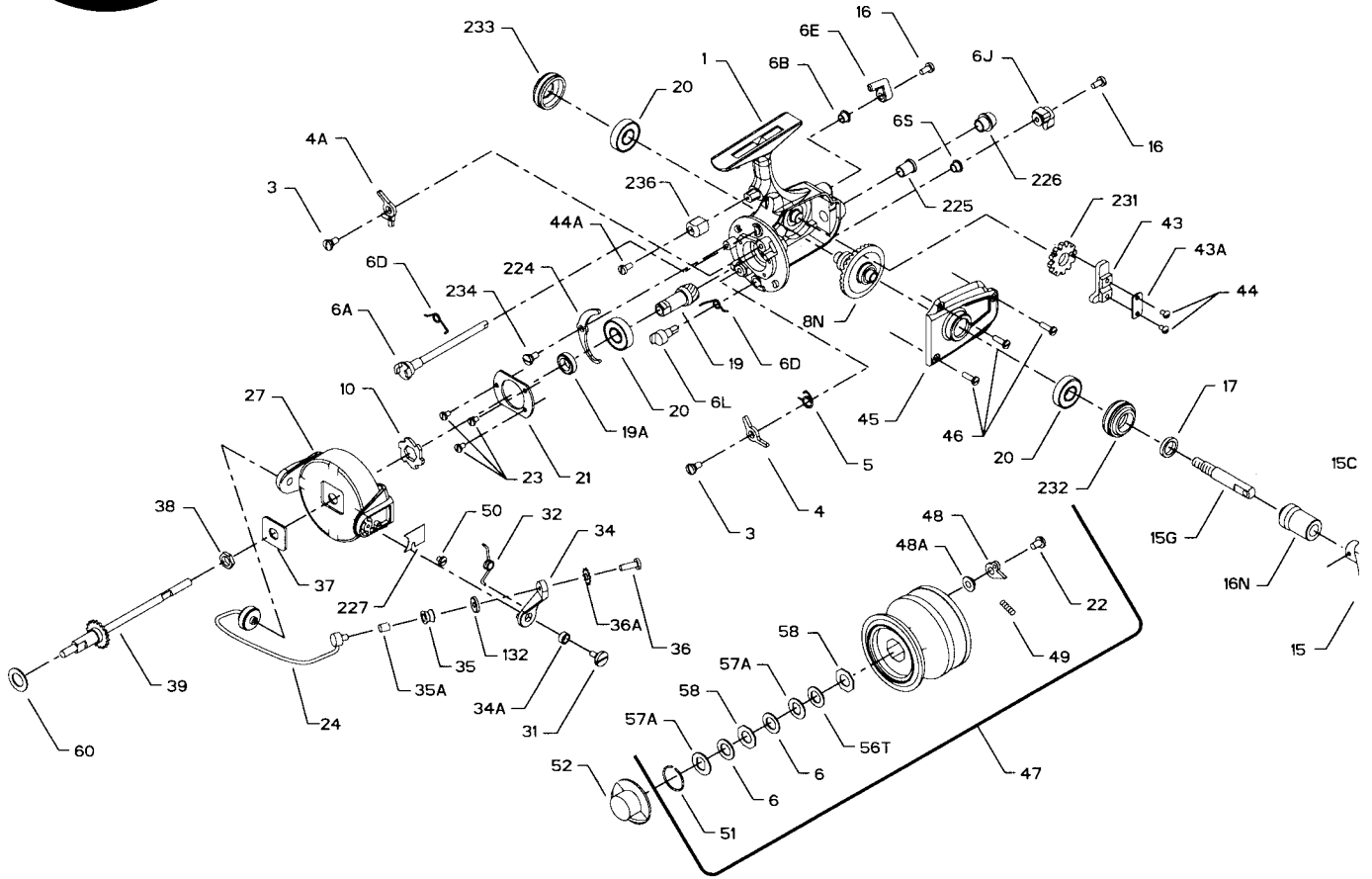




## PARTS AND PRICE LIST FOR MODELS 7500SS AND 8500SS



Key No.	Part No.	Description	Price	Key No.	Part No.	Description	Price
1	1-7500	Housing	\$23.35	35	35-750	Line Roller	\$3.70
	1-8500	Housing	23.35	35A	35A-704	Line Roller Bushing	.45
3	3-750	Dog Screw (2 req.)	.80	36	36-750	Bail Stud Screw	.45
4	4-750	Dog	.80	36A	36A-750	Lock Washer	.45
4A	4A-750	Silent Dog	1.50	37	37-706	Rotor Washer	.60
5	5-704	Click Dog Spring	.50	38	38-710	Rotor Nut	.50
6	6-60	Drag Washer-HT100 (2 req.)	.70	39	39-750	Spool Shaft	6.95
6A	6A-750	Upper Eccentric	1.35	43	43-750	Crosswind Block	1.80
6B	6B-750	Upper Eccentric Liner	.45	43A	43A-750	Crosswind Block Plate	.50
6D	6D-710	Eccentric Spring	.45	44	44-750	Crosswind Block Screw (2 req.)	.45
6E	6E-750	Anti-Reverse Lever	.90	44A	44-750	Trip Bumper Screw	.45
6J	6J-750	Silent Dog Lever	.90	45	45-7500	Housing Cover	4.10
6L	6L-750	Silent Eccentric	1.00	46	46-750	Housing Cover Screw (3 req.)	.45
6S	6B-700Z	Silent Eccentric Liner	.40	47	47-7500	Spool (Complete)	23.00
8N	8N-7500	Main Gear	13.50		47-8500	Spool (Complete)	25.00
10	10-750	Ratchet	1.50	48	48-750	Click Tongue	.50
15	15-750	Handle	11.35	48A	48A-750	Click Tongue Washer	.50
15C	15C-750	Handle Pivot Screw	.50	49	49-710	Click Tongue Spring	.45
15G	15G-850	Handle Pivot	2.50	50	50-712	Bail Spring Cover Screw	.50
16	16-910	Eccentric Screw (2 req.)	.45	51	51-704	Retaining Ring	.45
16N	16N-850	Handle Collar	1.55	52	52-750	Drag Knob	5.35
17	17-750	Seal Washer	.45	56T	56T-704	Drag Washer (Teflon <sup>®</sup> )	.50
19	19-750	Pinion	8.60	57A	57A-750	Drag Washer Keyed (2 req.)	.50
19A	19A-750	Pinion Spacer	.80	58	58-704	Metal Keyed (Octagon) (2 req.)	.50
20	20-700	Bearing	16.00	60	60-750	Thrust Washer	.60
21	21-750	Bearing Cover	1.50	132	132-750	Roller Washer	.80
22	22-750	Spool Click Screw	.45	224	224-750	Transfer Lever	1.80
23	23-750	Bearing Cover Screw (3 req.)	.45	225	225-750	Crosswind Shaft Bushing	1.50
24	24-750	Bail Wire	9.75	226	226-7500	Bushing Cap Cover	1.00
	24-850	Bail Wire	10.15	227	227-750	Bail Spring Cover	.45
27	27-750	Rotor	11.35	231	231-750	Crosswind Gear	1.80
	27-850	Rotor	13.05	232	232-750	Bearing Cover (Open)	2.15
31	31-750	Bail Arm Screw	1.00	233	233-750	Bearing Cover (Closed)	2.15
32	32-750	Bail Arm Spring	.90	234	234-750	Transfer Lever Screw	.45
34	34-750	Bail Arm	2.65	236	236-750	Trip Bumper	.50
34A	34A-750	Bail Arm Bushing	.45				